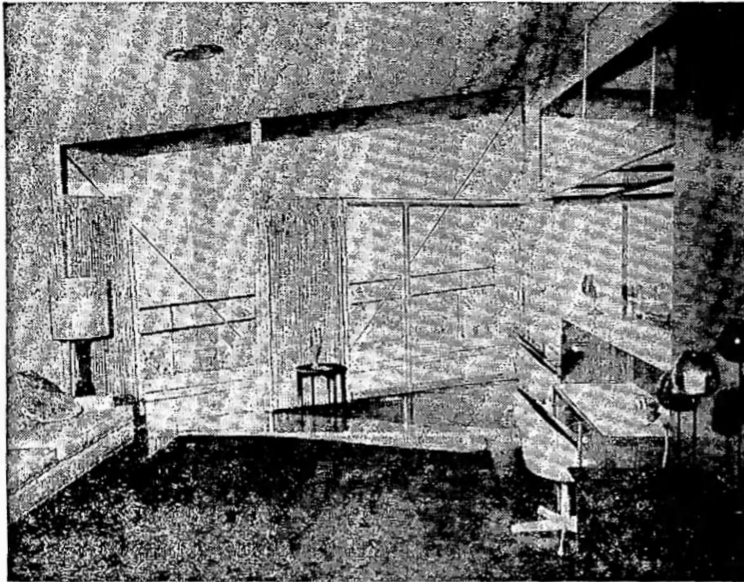


Independent Press-Telegram Southland Magazine



Almost like a crown, as view suggests, the Sippelle home sits high on a hill.

SOUTHLAND HOMES

Like a Crown Upon a Hillside

By Stella George

ONE OF THE most fascinating homes in Southern California is that belonging to Mr. and Mrs. James Sippelle, 2530 E. 21st St., Signal Hill. A split level structure, the home wanders down a hill, overlooking the city in the distance. Custom designed by an expert, it is a crown upon the hillside which it stands.

Soaring outward from the family room of the home of Mr. and Mrs. James Sippelle, this balcony viewed through a glass wall seems almost to be flying. Below, the living room. Steps, right, lead to entry hall.

Photos by Joe Rittner

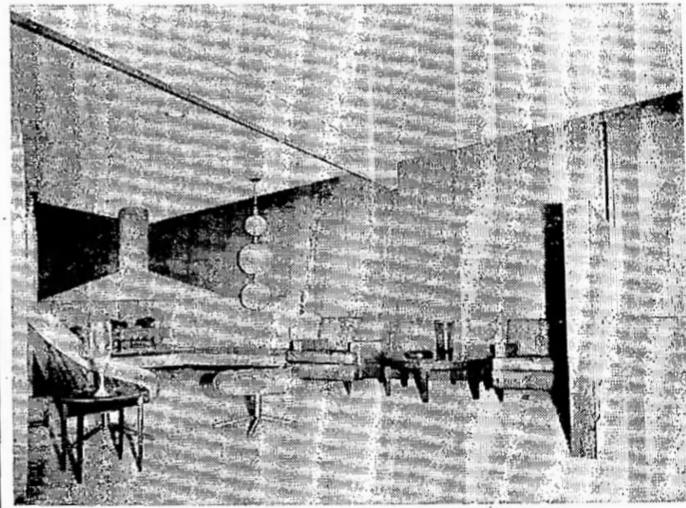
RATTAN FURNITURE
FEBRUARY SPECIAL
EXTRA LARGE
3-PIECE SECTIONAL
\$13900

Big Selection of Matching Chairs, Ottomans, End Tables, Lounges, See Grass, Hemp and Sisal Rugs. See Our New Swag Hanging Lamps.

HOUSE AND GARDEN

TROPIC SHOP

GE 8-0365 Free Parking
 2108 Lakewood Bl., Long Beach



ROOM ADDITIONS

our 23rd year serving
LONG BEACH — LAKEWOOD
FOR YOUR PROTECTION!

We furnish notarized lien waivers from all suppliers and workmen. This is your guarantee of performance and protects you against "Paying double."

No Salesmen -- No Commissions
 Your job is planned and priced by one of the owners, which enables us to build for you . . .

BEDROOMS FOR ONLY **2068** MO.
FAMILY ROOMS FOR ONLY **3732** MO.

We will finance any part or all at 5% (or less) and give you up to 5 years to pay.

THERE IS NO SUBSTITUTE FOR EXPERIENCE
WE WILL DO THE COMPLETE JOB OR ANY PART AND YOU DO THE REST
 over 3,500 satisfied customers

ECONOMY Constructors, Inc. 2119 EAST CURRY LONG BEACH
 GA 3-0955

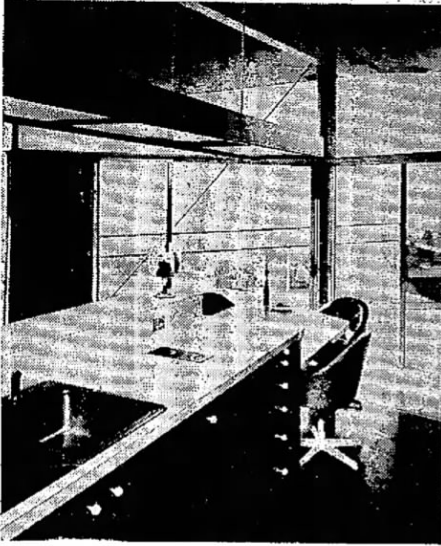
CUSTOM MADE TRAVERSE DRAPERIES

WE MAKE YOUR DRAPERIES WITHOUT CHARGE. Representatives will have full variety of fabrics and textures in a wide range of colors. DRAPES ARE FAN FOLDED, BEING STITCHED, REMOVING OF ALL SELVAGES, OVERLOCK SEAMS, COVERED WEIGHTS, DOUBLE 4" TOP AND BOTTOM HEMS, SHOP AT HOME. No cost or obligation for this service.

NO CHARGE FOR LABOR
\$199 YD.
 Reg. 2.98-3.98 Per Yd.
 INCLUDING FABRIC

HEmlock 7-1448
 For Free Estimates "DAY OR EVE!"

Draperies by Mr. Harold
 USE YOUR BANKAMERICARD
 Low Down Payment — Take 2 Years to Pay
 GARDEN GROVE AND ALL BEACH AREAS—CALL COLLECT
 "16 YEARS" EXPERIENCE



Glass walls in the kitchen orient themselves to the very center of the downtown section of Long Beach.

The street level front door opens to a wide entry hall. Straight ahead is the family room kitchen area, at the far end of which glass walls meet at a point which orients itself to the center of downtown Long Beach. Beyond the glass walls, a porch extends to another arrow point.

While the entire home is a flawless balance of symmetry and design, individual rooms are imaginative and unusual in shape. The decorating scheme is planned accordingly.

EFFICIENCY plus is the keynote in the streamlined kitchen. The working area is arranged so that one can stand in the center and have every needed item within arm's reach. A low, white, sit-down bar with formica top extends to one end of the kitchen, separating the latter from the family room adjoining. Woodwork is all solid walnut, rich in color and texture, a sharp and attractive contrast to the white formica. Chairs around the bar are of a greenish golden color. Floors in both rooms are impregnated cork with a long-wearing vinyl top finish.

The family room is furnished with an eye to easy maintenance as well as good looks. The couch is of champagne color; a small piano from Japan is of walnut. A rust carpet which the Sippelle girls brought from Morocco provides a gay color accent. A built-in desk takes up little room and avoids clutter.

Four steps up from the family room are two doors, one leading to the garage and the other to a blue powder room. Four steps down, on the kitchen side, lead to a triangular living room. Carpeting on the steps and in the living room is of natural, hand-knotted wool, almost white in color. A tree stand-

ing metal fireplace is in one corner. Furniture is casual—avocado chairs, an inlaid table from Morocco, and little or no bric-a-brac.

THE ENTIRE far wall of the living room is glass, overlooking the magnificent view in the distance. Outrigger linen drapes bear out the impeccable taste used in the interior decorating.

To the left of the entry hall is a stairway which leads to the bedroom and playroom downstairs. In the master bedroom, directly beneath the living room, fine, simple furnishings add to the size of the room. A bathroom adjoins the bedroom. Brown-gold color tones are used on the long dressing table-wash basin area. A sunken tub, with a planter in the background, looks out through a picture window to the city beyond. Two walls are mirrored, adding to the size of the already large room.

BEDROOMS for the Sippelle girls are unique in design and color. The far walls of both rooms are of glass, like other rooms in the home. In one room pure white is accented with pink; in the other room with blue. The blue is a vivid, Copenhagen shade, carried out in hand-painted wall murals and fluffy throw rugs. The deep pink wall murals in the other room resemble huge face doilies—pretty and feminine.

The girls' bathroom is equipped to serve also as a laundry, with washer and dryer convenient. Nearby is their playroom, and here again is the glass wall with the view beyond.

The landscaping is in the preliminary stages, but plans, which include a lower level swimming pool, are underway. Because of the unusual site, the lack of landscaping is not complete detracts in no way from the elegance of the home.

The Berkshire House
YOUR FAVORITE MAPLE SHOPS

WITH
AN OFFER
LIKE THIS
YOU SHOULD
STAY IN BED



SPRING AIR.
MATTRESS

NATIONALLY ADVERTISED since '1929'

Enjoy wonderful, restful, sleepful nights. Even stay in bed daytimes too. Now you can have a genuine Spring Air mattress at a sale price. Come in, make your choice, and snuggle on a Spring Air tonight.

Registered 10-Year Guarantee

Dream Master



ADVERTISED IN LIFE

DREAM MASTER
Twin or full size, mattress or box spring. Firm, comfortable, long, unique ticking.

DREAM MASTER DELUXE
Twin or full size, mattress or box spring. "Gold Medal" innerspring. Gold Damask ticking.

\$49⁹⁵

\$39⁹⁵

SPRING AIR — MAKERS OF THE RENOWNED "BACK SUPPORTER" MATTRESS

EASY TERMS AVAILABLE
90-Day Charge Account Invited

In Long Beach

4310 ATLANTIC

GA 4-5422 — NE 6-5536

IN SANTA ANA

1515 N. Main — KI 7-4518

IN HUNTINGTON PARK

7640 Pacific Blvd. — LU 2-9635



Sunday, February 11, 1962

Thirteen

WHY DID SOVIET AGREE TO SPY SWAP?

Russ-Peiping Conflict Aided Powers' Release

By JOHN M. HIGHTOWER
WASHINGTON (UPI)—Russia's decision to release U2 pilot Francis Gary Powers...

...now being played between President Kennedy and Premier Khrushchev...

changes of ideas exemplified by the visit to Kennedy of Albert Adzhub...

the consequences of a U.S. Soviet nuclear war...

for Red spy Col. Rudolf Abel?

Russia just as the United States was anxious to recover Powers.

urly's dramatic event is this: Does Khrushchev fear nuclear war enough...

hopes to split the West by negotiating separately with Germany over Berlin...

Southland's OWN SUNDAY Newspaper Independent Press-Telegram

Phone HE 5-1161 — Classified No. HE 2-9957 — PRICE 20 CENTS LONG BEACH 12, CALIFORNIA, SUNDAY, FEBRUARY 11, 1962 VOL. 10—NO. 25 152 PAGES

Secrecy Blankets Exchange, Return of U2 Pilot to U.S.

WASHINGTON (Sunday UP)—An Air Force transport plane from overseas landed at nearby Andrews Air Force Base, Md., early today and two persons dressed in civilian clothes hurried off the aircraft...

Air Force officers at Washington and the crew of the plane declined to discuss the identity of the passengers.

Officials said they could not disclose the destination of the helicopter.

Spy Swap Hailed by West

LONDON (UPI)—Western Europe Saturday hailed the Powers-Abel exchange as a triumph of American diplomacy and one London newspaper said President Kennedy had handled the swap "with consummate theatrical skill."

Many Western European countries expressed their hope that the exchange would improve the international climate.

In Rome, the Italian government went ahead with its plans to try Bulgarian spy Lt. Milosev Saturday on charges that he carried out a Powers-type aerial reconnaissance mission over NATO missile bases in southern Italy.

It added that Powers, could be sure of the welcome he will get in America "because he confessed so fully about his Moscow trial."

Prominent Nevada Fair Lost on Flight

ELKO, Nev. (UPI)—E. J. Quera, president of the First National Bank of Nevada, and his wife were overcast and forced to land Saturday night on a flight from Palm Springs, Calif., to Elko.

Quera, piloting his seven-passenger Air Commander, had been due in Elko late Saturday afternoon.

\$900 MILLION FOR L.B. Huge Development Outlined in I, P-T

Craving with the vibrancy of a teen-ager, Long Beach will take on bright and benefits this year in a big way, reports Ken Oultote, independent Press-Telegram business editor in today's Business and Realty Section. And, he continues, this city is glowing in health—economic health—thanks to the great construction program.

More Rain Due Today, Season Total 10 Inches



WHERE POWERS-ABEL SWAP TOOK PLACE This is Glienicke Bridge in Berlin suburb of Wansow where swap of American U2 pilot Francis Gary Powers and Soviet spy Rudolf Abel took place Saturday. West German police guard frontier.

Family Leaves for Rendezvous

The parents of U2 pilot Francis Gary Powers left their Norton, Va., home by car Saturday night for a rendezvous with their son at an undisclosed location.

Germany Convicts Russ Spy

KARLSRUHE, Germany (UPI)—West Germany Saturday convicted a Soviet citizen of spying and sentenced him to four years in prison.

Calif. Congressman Wife Hurt in Crash

COSBESKILL, N.Y. (UP)—A California congressman was in satisfactory condition in a hospital here Saturday after his automobile struck a tree during a snowstorm.

Crack Train Crashes Into Freight; 10 Injured

LAGONIER, Ind. (UPI)—A freight train jumped the tracks into the path of a New York Central passenger train speeding alongside it Saturday, injuring 10 persons and derailing 30 cars into a cornfield.

Skindiver Lost Off Newport

NEWPORT BEACH (UPI)—A skindiver identified as William B. Butler, 25, of 18022 Devonshire Place, Garden Grove, was missing and presumed drowned Saturday night.

Where to Find It

JERRY LEWIS, new making \$50,000 a week, says he was once so poor he made a piker out of Cinderella. Read Staff Writer John Doorn's interview with the famed comic on Page A-5.

The Weather--

Showers and possibly a few thunderstorms today and tonight. Clearing Monday. Gusty winds, combined cool. High today 68.

Bonn Set for Reply to Soviet

BONN (UPI)—The West German reply to the Soviet memorandum of Dec. 27 proposing separate Bonn-Moscow talks in Berlin will be completed next week, the Foreign Ministry announced Saturday.

Worst Blaze Hits Ft. Wayne

FORT WAYNE, Ind. (UP)—The worst fire in Fort Wayne's history raged out of control in the downtown business section more than six hours Saturday before it could possibly last into Sunday.

Skidder Lost Off Newport

NEWPORT BEACH (UPI)—A skindiver identified as William B. Butler, 25, of 18022 Devonshire Place, Garden Grove, was missing and presumed drowned Saturday night.

Calif. Congressman Wife Hurt in Crash

COSBESKILL, N.Y. (UP)—A California congressman was in satisfactory condition in a hospital here Saturday after his automobile struck a tree during a snowstorm.

Crack Train Crashes Into Freight; 10 Injured

LAGONIER, Ind. (UPI)—A freight train jumped the tracks into the path of a New York Central passenger train speeding alongside it Saturday, injuring 10 persons and derailing 30 cars into a cornfield.

Skindiver Lost Off Newport

NEWPORT BEACH (UPI)—A skindiver identified as William B. Butler, 25, of 18022 Devonshire Place, Garden Grove, was missing and presumed drowned Saturday night.

Where to Find It

JERRY LEWIS, new making \$50,000 a week, says he was once so poor he made a piker out of Cinderella. Read Staff Writer John Doorn's interview with the famed comic on Page A-5.

Worst Blaze Hits Ft. Wayne

FORT WAYNE, Ind. (UP)—The worst fire in Fort Wayne's history raged out of control in the downtown business section more than six hours Saturday before it could possibly last into Sunday.

Skidder Lost Off Newport

NEWPORT BEACH (UPI)—A skindiver identified as William B. Butler, 25, of 18022 Devonshire Place, Garden Grove, was missing and presumed drowned Saturday night.

Calif. Congressman Wife Hurt in Crash

COSBESKILL, N.Y. (UP)—A California congressman was in satisfactory condition in a hospital here Saturday after his automobile struck a tree during a snowstorm.

Crack Train Crashes Into Freight; 10 Injured

LAGONIER, Ind. (UPI)—A freight train jumped the tracks into the path of a New York Central passenger train speeding alongside it Saturday, injuring 10 persons and derailing 30 cars into a cornfield.

Skindiver Lost Off Newport

NEWPORT BEACH (UPI)—A skindiver identified as William B. Butler, 25, of 18022 Devonshire Place, Garden Grove, was missing and presumed drowned Saturday night.